

DS-A81016S

Hybrid Storage Area Network



- Modular and No-Cable Design
 - SBB 2.0 Structure
 - 4G High-Speed Cache
 - 64-Bit Multi-Core Processor
 - Four 1000M Network Interfaces
 - 12G SAS High-Speed Transmission Channel
 - Redundant Design for Key Modules
 - Detection Before Operation
 - Detection in Operation
 - Fault Reparation
 - RAID 0, 1, 3, 5, 6, 10, 50 and VRAID
 - Global and Local Hot Spare
 - Supports Building RAID with Surveillance-Class HDD
 - Quick RAID Building
 - Up to Two Storage Enclosures Cascadable Behind a Single SAS Port
 - Synchronous Backup of Key Information in System Disk and HDD
 - RAID-Based Tamper-Proof Data Technology
 - Auto Data Synchronization Between Devices
 - CPU Load Balance
 - Auto Fan Tuning
 - Quick Configuration
 - Various Alarm Management
 - SADP Protocol Supported
 - SNMP Supported
 - Space Pre-Allocation Strategy
- Direct Storage for Video Stream and Picture Stream
 - Supports Direct IP Camera/DVR/NVR Streaming
 - Supports H.264, H.264+, H.265, H.265+
 - Supports Camera Access through RTSP, ONVIF, and PSIA Protocols
 - Supports Alarmed/Scheduled/Manual Recording
 - N+1 Technology
 - Automatic Network Replenishment (ANR), Timely Uploading, and Video Loss Alarm
 - Key Video Locking
 - Supports Direct Streaming and IPSAN Modes
 - Search, Play and Download Videos by Video Type and Time

The DS-A81016S is a Hybrid SAN (Storage Area Network) that is equipped with a single-controller structure. The Hybrid SAN product creates a network that accesses data storage servers, integrates Hikvision's unique direct video streaming technology, and also supports IPSAN/FCSAN.

This flexible, cost-effective solution features ONVIF-support to third-party cameras, support for RTSP and SIP protocols, and extended data retention.

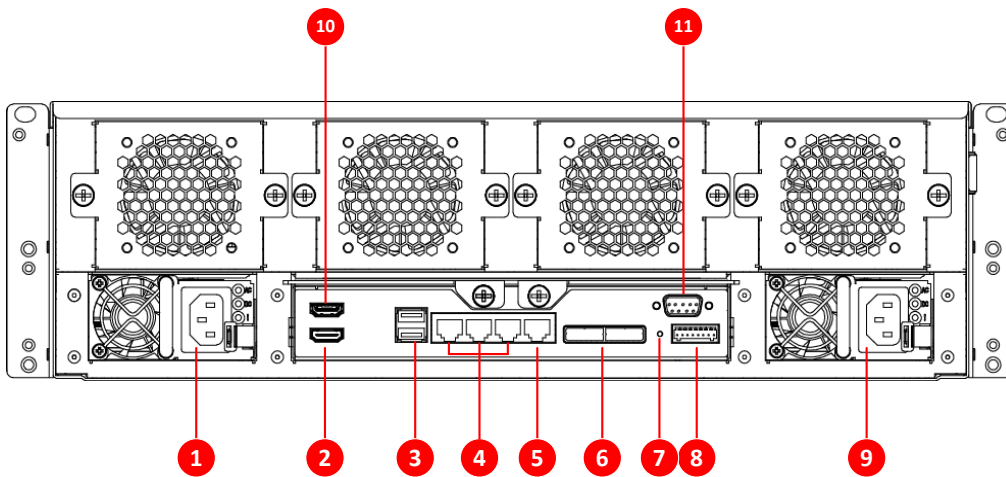
Hikvision's Hybrid SAN systems do not require a recording server, which makes it a truly simple, flexible, and budget-friendly application.

Available models: DS-A81016S

Specifications

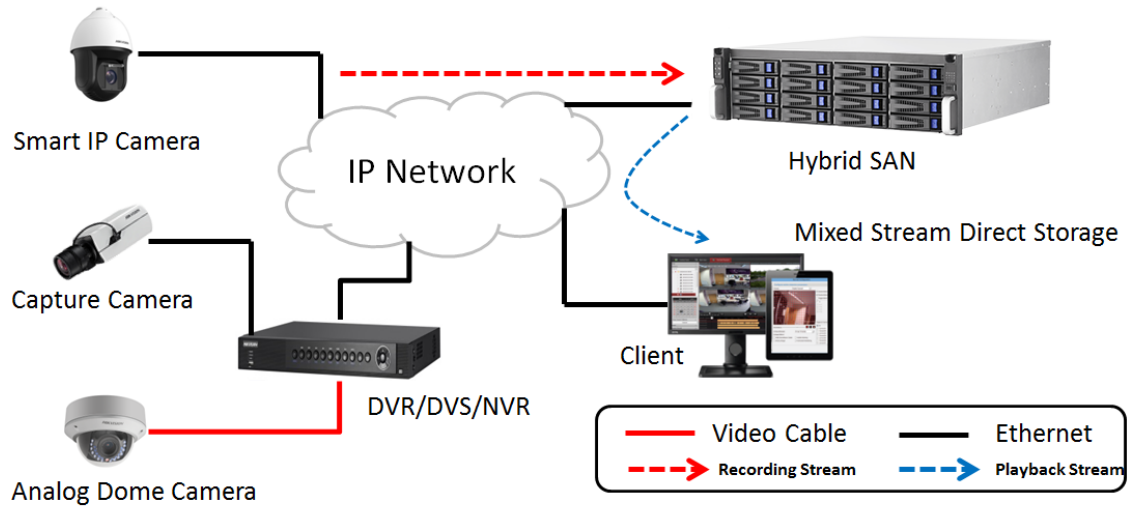
DS-A81016S	
Performance	
Direct Streaming Mode: Video (2 Mbps) + Picture	320-ch (recording + playback)
IPSAN	180-ch (recording + playback)
Controller	
Processor	One controller (64-bit multi-core processor)
Cache per Controller	4 GB (extendable to 32 GB)
HDD	
HDD Slot	16
Interface and Capacity	SATA/1 TB, 2 TB, 3 TB, 4 TB, 6 TB, 8 TB
Hot-Swapping	Supported
RAID	RAID0, 1, 3, 5, 6, 10, 50, VRAID, JBOD, Hot-spare
Network	
Protocol	iSCSI, RTSP, ONVIF, PSIA
Interfaces	
Data Network Interface	2 (extendable to 6), 1,000M Ethernet interface (10GbE optional)
Management Network Interface	1, 100M Ethernet Interface/Controller
MiniSAS Interface	Supported
COM	2: 1 for Hyper Terminal, 1 for mobile alarm or UPS
USB	2
VGA	1
General	
Power Supply	Gold-metal redundant power supply
Consumption (with HDDs)	<ul style="list-style-type: none"> Working: ≤255 W (870 BTU with 16 HDDs); Rated: ≤550 W
Environment Temperature	<ul style="list-style-type: none"> Working: 41° to 104° F (5° C to 40° C) Storage: -4° to 158° F (-20° C to 70° C)
Environment Humidity	<ul style="list-style-type: none"> Working: 20 to 80% RH (non-condensing); Storage: 5% to 90% RH (non-condensing)
Chassis	19" 3U
Dimensions (W x D x H)	17.3" x 5.2" x 19.5" (440 x 132 x 495 mm)
Weight (without HDDs)	≤ 44.1 lbs (20 kg)

Physical Interfaces



1. Power Module 1	7. Reset Button
2. HDMI Interface 1	8. Alarm Interface
3. USB Interface	9. Power Module 2
4. Data Network Interface 1 to 3	10. HDMI Interface 2
5. Management Network Interface	11. RS-232 Interface
6. SAS Interface	

Typical Application



Hikvision Tested and Recommended HDDs

HDD Model	Capacity (TB)	HDD Model	Capacity (TB)
ST12000NM0008	12	ST1000NM0055	1
ST10000NM0478	10	WD101KRYZ-01	10
ST10000NM0086	10	WD101KRYZ-31	10
ST10000NM0016	10	WD8003FRYZ-31	8
ST8000NM0055	8	WD8003FRYZ-01	8
ST8000NM0016	8	WD6002FRYZ-31	6
ST6000NM0024	6	WD4002FYYZ-31	4
ST4000NM0024	4	WD2005FBYZ	2
ST2000NM0024	2	WD6002FRYZ	6
ST6000NM0115	6	WD4002FYYZ	4
ST4000NM0115	4	HUS726T4TALA6L4	4
ST2000NM0125	2	HUS726T6TALE6L4	6
ST4000NM0035	4	HKS728T8TALE-31	8
ST3000NM0005	3	HUS728T8TALE6L4	8
ST2000NM0055	2	HUH721212ALE-31	12