

Title:	RN DS-KV8x02-IM v1.5.0 013119NA	Version:	v1.5.0	Date:	013119
Product:	DS-KV8x02-IM Door Station	Build:		Page:	1 of 8
Action Required:	None, Information Only				

## ■ v1.5.0\_20181029 USA GUI Firmware

- Customized in v1.5.0 20180613

**NOTE:** v1.5.0 firmware is not compatible with previous firmware versions. Make sure that all devices are using v1.5.0 firmware. After upgrading to new firmware, manually **restore default settings**.

- Added Features
  - The indoor station (DS-KHxxxx-xxxx) can live view and hear the voices from the door station (DS-KVxxxx-xxx). Clicking the enable/disable menu will toggle the indoor station's ability to audibly communicate with the door station.
  - Control two locks
    - The door station can connect to a DS-K2M060 door control unit with an RS-485 connection. When verified successfully, the door with RS-485 and door two will be open.
    - iVMS4200, indoor station, and HikConnect can control two locks.

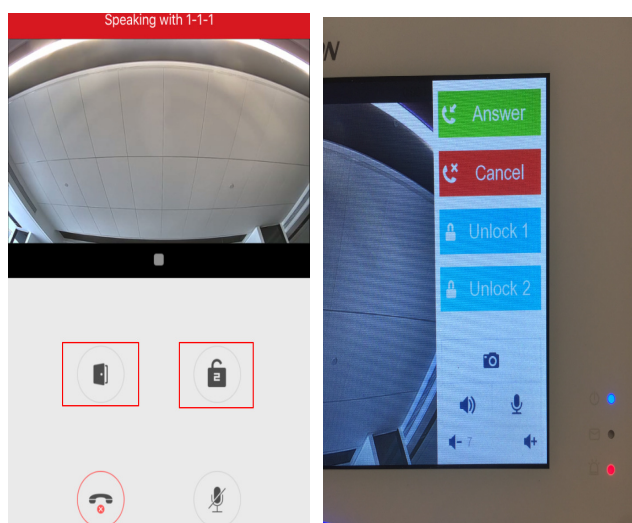


Figure 1, Control Two Locks

- “Fire Alarm” Input Type – When it triggers, all doors open
- Voice Prompts – When a door station calls an indoor station after timing out, the door station will not prompt with the voice message, “nobody is at home.”

<b>Title:</b>	RN DS-KV8x02-IM v1.5.0 013119NA	<b>Version:</b>	v1.5.0	<b>Date:</b>	013119
<b>Product:</b>	DS-KV8x02-IM Door Station	<b>Build:</b>		<b>Page:</b>	2 of 8
<b>Action Required:</b>	None, Information Only				

- **Connect to Card Reader with Keypad via RS-485** – Swipe the card or input the room number + unlock password to unlock the door.
- **When DS-KV8x02-IM Door Station Connects to iVMS 4200** – A short press at the door station calls the indoor station and the iVMS-4200 at the same time.
- **Alarm Output Function** – When a door station calls an indoor station, alarm output will send the output signal. Upon picking up the call, calling time out, cancelling the call, or unlocking the door, the alarm output signal will be disrupted.
- Supports American DST Rules by Default
- **When Monitoring Door Station** – iVMS-4200 can enable two-way audio with the door station. It is not recommended to use the video intercom between an indoor station and a door station when iVMS-4200 two-way audio is enabled with the door station.

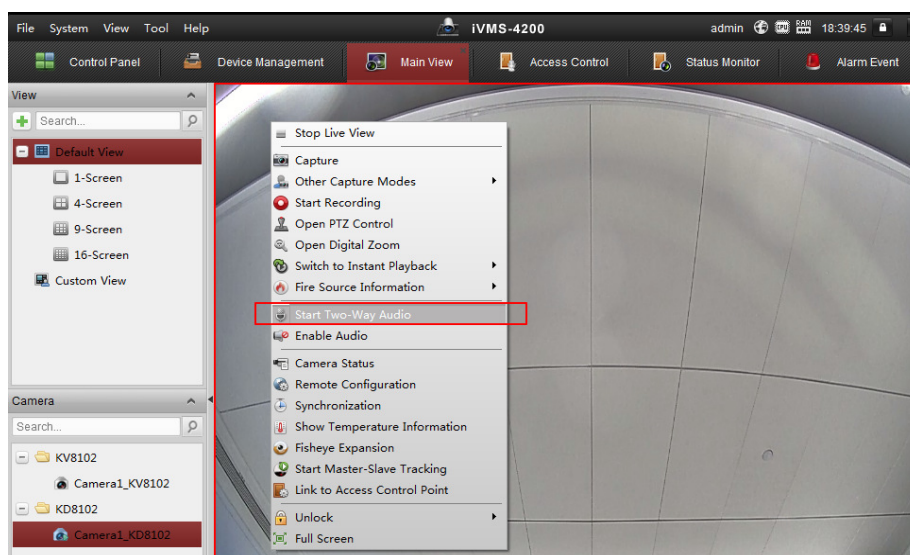


Figure 2, Two-Way Audio

- **Un-Authenticated Card Swipes** – Door station can upload a record of un-authenticated card swipes to iVMS-4200.

<b>Title:</b>	RN DS-KV8x02-IM v1.5.0 013119NA	<b>Version:</b>	v1.5.0	<b>Date:</b>	013119
<b>Product:</b>	DS-KV8x02-IM Door Station	<b>Build:</b>		<b>Page:</b>	3 of 8
<b>Action Required:</b>	None, Information Only				

In...	Alarm Time	Alarm Source	Alarm Details	Alarm Content	Live View	Send E...	Video ...
99	2018-06-30 17:45:24	Door Station:KD8102 Came...	Trigger Camera: Camera1_10.9...	Video Intercom Event			
98	2018-06-30 17:45:15	Door Station:KD8102	Card Number: 4043496675	Illegal Card Event			

Figure 3, Illegal Card Event

- **Armed Channels** – Door station and indoor station can be armed by multiple channels (maximum eight). Alarm information will upload to every arming channel. For example, iVMS-4200 and NVR, and the iVMS-4200 can display an arming channel list in **Remote Config > Intercom > Arm Information**.

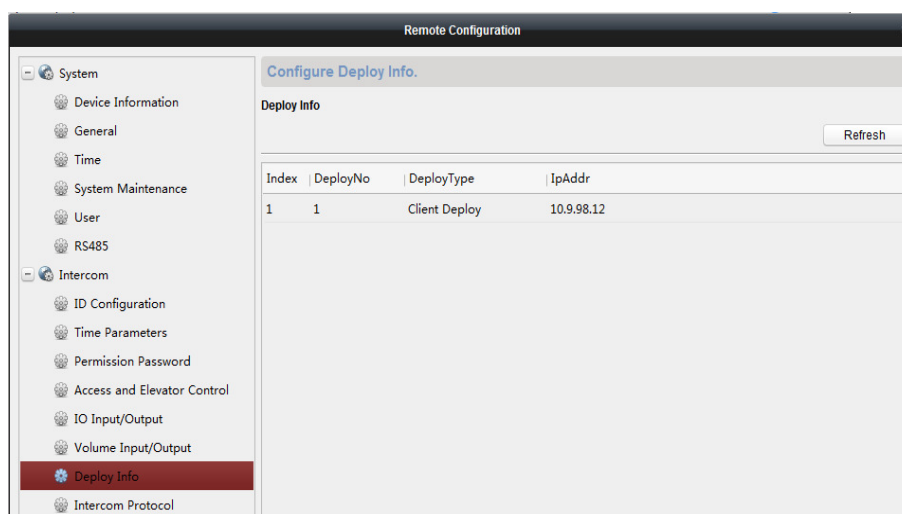


Figure 4, Remote Configuration

- **Issue Cards** – A door station can be used as a card issuer to obtain a card number when adding the card in the iVMS-4200.

<b>Title:</b>	RN DS-KV8x02-IM v1.5.0 013119NA	<b>Version:</b>	v1.5.0	<b>Date:</b>	013119
<b>Product:</b>	DS-KV8x02-IM Door Station	<b>Build:</b>		<b>Page:</b>	4 of 8
<b>Action Required:</b>	None, Information Only				

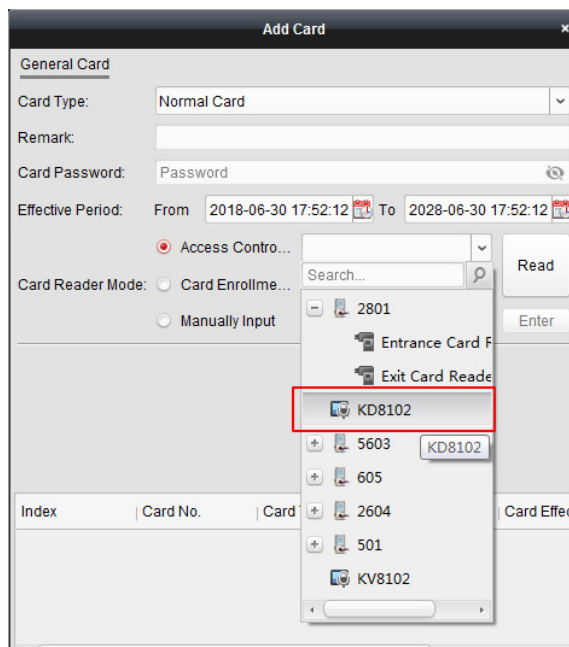


Figure 5, Add a Card

## ■ Supported Devices

- DS-KV8102-IM
- DS-KV8202-IM
- DS-KV8402-IM

## ■ List of Compatible Hikvision Devices

Model	Firmware
DS-KH8301-WT	v1.5.0_181029
DS-KH8300-T	v1.5.0_181029
iVMS-4200	v2.7.2.7 build 20181119

## ■ Installation and Configuration

- The indoor station (DS-KHxxxx-xxxx) can live view and hear the voices from the DS-KV8x02-IM door station. Clicking enable/disable on the audio menu will toggle the indoor station's ability to audibly communicate with the door station.

<b>Title:</b>	RN DS-KV8x02-IM v1.5.0 013119NA	<b>Version:</b>	v1.5.0	<b>Date:</b>	013119
<b>Product:</b>	DS-KV8x02-IM Door Station	<b>Build:</b>		<b>Page:</b>	5 of 8
<b>Action Required:</b>	None, Information Only				

- Enter the indoor station device path: **Live View > Specified Door Station** to hear the voice from the door station
- Enter the indoor station device path: **Live View > Specified Door Station** and click the Enable Audio menu (with blue background) to talk with the door station
- Click the Enable Audio menu again, and the indoor station will not be able to talk with the door station
- The DS-KV8x02-IM door station can connect to a DS-K2M060 door control unit through an RS-485 connection. When verified successfully, door one with RS-485 and door two with NO/NC COM will open.
- Connect wiring as shown in Figure 7, Wiring a Secure Door Control Unit.

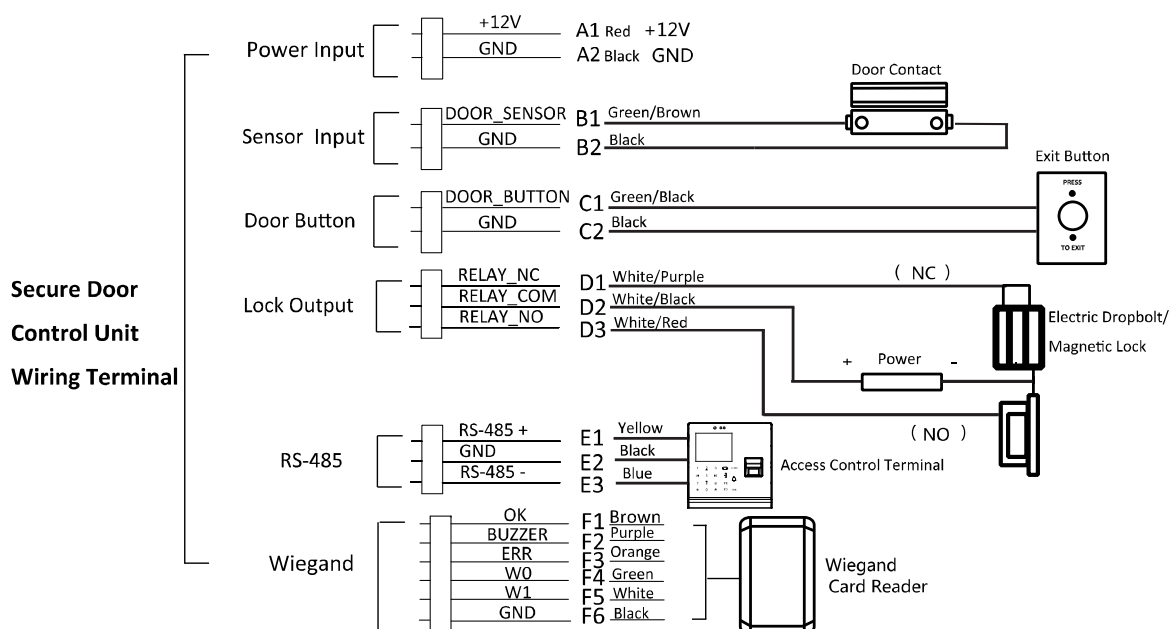


Figure 6, Wiring a Secure Door Control Unit

- Connect wiring between a DS-KV8x02-IM indoor station and a lock (see Figure 8, Door Station and Lock Wiring).

<b>Title:</b>	RN DS-KV8x02-IM v1.5.0 013119NA	<b>Version:</b>	v1.5.0	<b>Date:</b>	013119
<b>Product:</b>	DS-KV8x02-IM Door Station	<b>Build:</b>		<b>Page:</b>	6 of 8
<b>Action Required:</b>	None, Information Only				

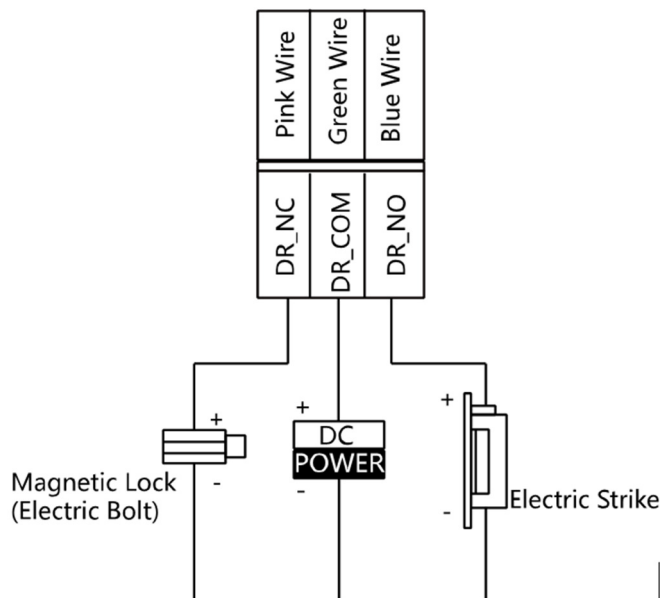


Figure 7, Door Station and Lock Wiring

- Configure Secure Door Control Units
  1. Enter the iVMS-4200 software path: Remote Configuration > System > RS-485.
  2. Set RS-485 address DIP switch to 1 (set door secure control unit DIP switch as 1).
  3. Set bitrate to 19600.
  4. Set working mode to Secure Door Control Unit.

<b>Title:</b>	RN DS-KV8x02-IM v1.5.0 013119NA	<b>Version:</b>	v1.5.0	<b>Date:</b>	013119
<b>Product:</b>	DS-KV8x02-IM Door Station	<b>Build:</b>		<b>Page:</b>	7 of 8
<b>Action Required:</b>	None, Information Only				

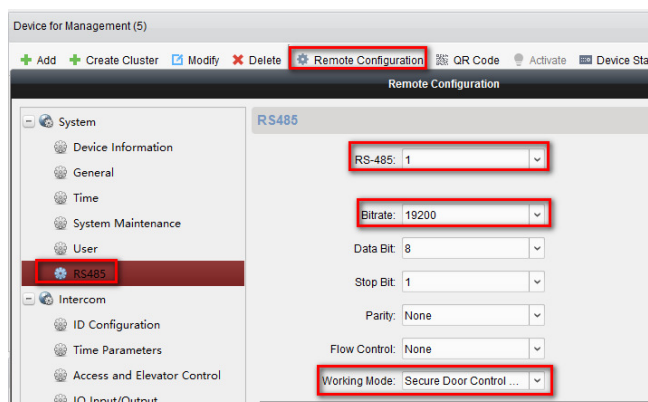


Figure 8, Configure Secure Door Control Units

**NOTE:** When pressing the call button on a door station, the indoor station will unlock two doors at the same time; you cannot unlock door one and door two separately.

You can configure the unlock time of the secure door control unit.

- Set Alarm Input Type to Fire Alarm (When it Triggers, All Doors Will Open)
  1. Enter the iVMS-4200 software to set the IO input: **Remote Configuration > Intercom > IO Input/Output**
  2. Set IO Input No to 1.
  3. Set Input Type to Custom.

<b>Title:</b>	RN DS-KV8x02-IM v1.5.0 013119NA	<b>Version:</b>	v1.5.0	<b>Date:</b>	013119
<b>Product:</b>	DS-KV8x02-IM Door Station	<b>Build:</b>		<b>Page:</b>	8 of 8
<b>Action Required:</b>	None, Information Only				

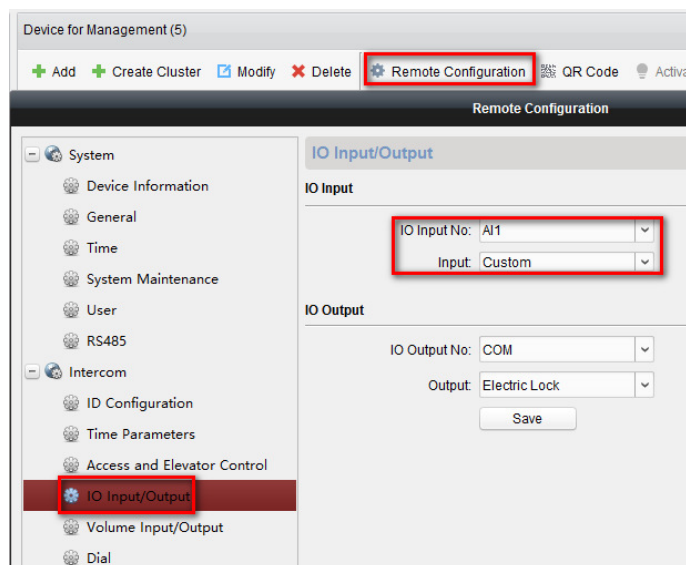


Figure 9, Set IO Input

**EXAMPLE:** Disconnect alarm1 and GND port, door one and door two will open