

Title:	RN DS-KD3002 v1.5.0 013019NA	Version:	v1.5.0	Date:	013019
Product:	DS-KD3002 Door Station	Build:		Page:	1 of 8
Action Required:	None, Information Only				

## ■ v1.5.0\_20181029 USA GUI Firmware

- Customized in v1.5.0\_180623

**NOTE:** v1.5.0 firmware is not compatible with previous firmware versions. Make sure that all devices are using v1.5.0 firmware. After upgrading to new firmware, manually **restore default settings**.

- Added Features
  - A KH indoor station can live view and hear the voices from a KD door station. Clicking the enable/disable menu will toggle the indoor station's ability to audibly communicate with the door station.
  - Control two locks
    - The door station can connect to a DS-K2M060 door control unit with an RS-485 connection. When verified successfully, the door with RS-485 and door two will be open.
    - iVMS-4200, indoor station, and HikConnect can control two locks.

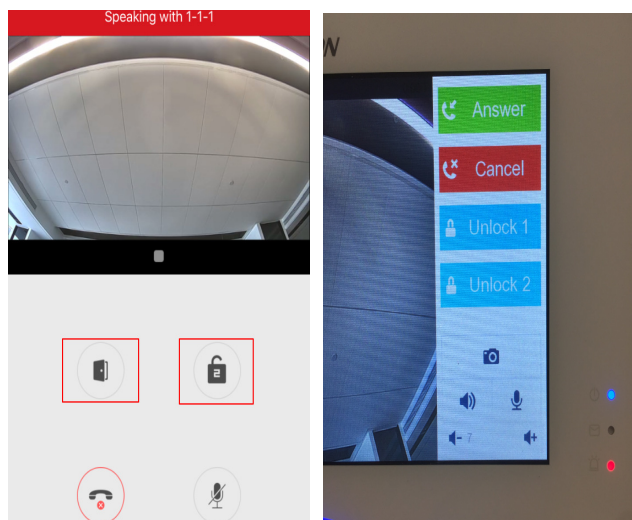


Figure 1, Control Two Locks

- “Fire Alarm” Input Type – When it triggers, all doors open
- When a door station calls an indoor station after timing out, the door station will not prompt with the voice message, “nobody is at home.”

Title:	RN DS-KD3002 v1.5.0 013019NA	Version:	v1.5.0	Date:	013019
Product:	DS-KD3002 Door Station	Build:		Page:	2 of 8
Action Required:	None, Information Only				

- **Connect to Card Reader with Keypad via RS-485** – Swipe the card or input the room number + unlock password to unlock the door
- **Alarm Output Function** – When a door station calls an indoor station, alarm output will send the output signal. Upon picking up the call, calling time out, cancelling the call, or unlocking the door, the alarm output signal will be disrupted
- **Supports American DST Rules by Default**
- When monitoring a door station, iVMS-4200 can enable two-way audio with the door station. It is not recommended to use the video intercom between an indoor station and a door station when iVMS-4200 two-way audio is enabled with the door station.

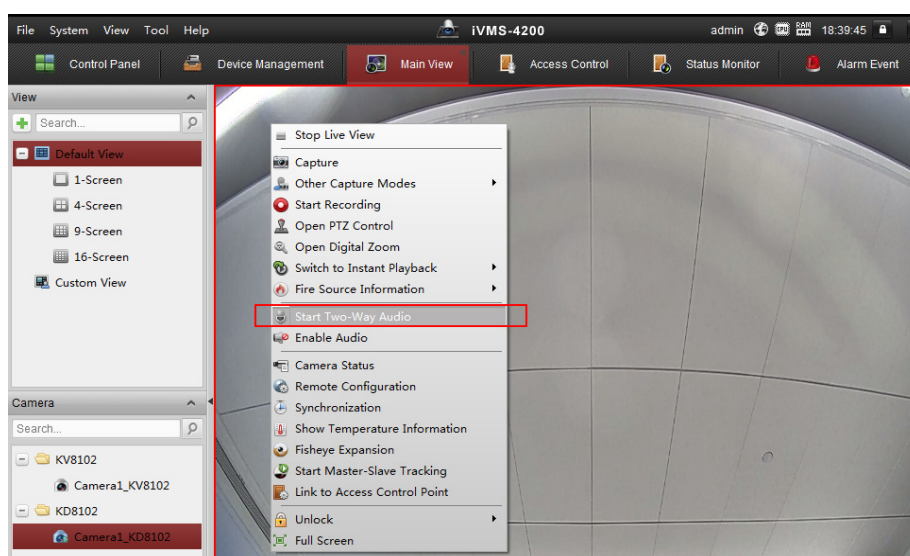


Figure 2, Two-Way Audio

- Door station can upload a record of un-authenticated card swipes to iVMS-4200.

In...	Alarm Time	Alarm Source	Alarm Details	Alarm Content	Live View	Send E...	Video ...
99	2018-06-30 17:45:24	Door Station:KD8102 Came...	Trigger Camera: Camera1_10.9...	Video Intercom Event			
98	2018-06-30 17:45:15	Door Station:KD8102	Card Number: 4043496675	Illegal Card Event			

Figure 3, Illegal Card Event

<b>Title:</b>	RN DS-KD3002 v1.5.0 013019NA	<b>Version:</b>	v1.5.0	<b>Date:</b>	013019
<b>Product:</b>	DS-KD3002 Door Station	<b>Build:</b>		<b>Page:</b>	3 of 8
<b>Action Required:</b>	None, Information Only				

- Door station and indoor station can be armed by multiple channels (maximum eight). Alarm information will upload to every arming channel. For example, iVMS-4200 and NVR, and the iVMS-4200 can display an arming channel list in **Remote Config > Intercom > Arm Information**.

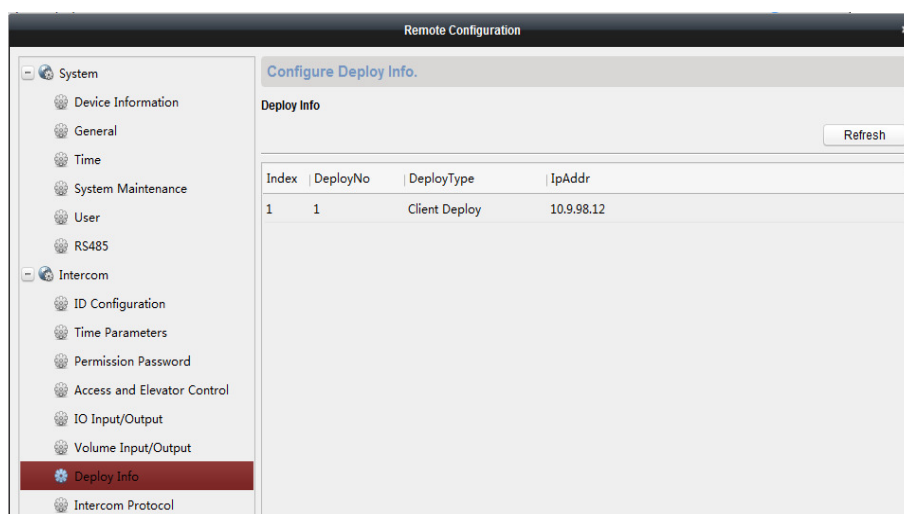


Figure 4, Remote Configuration

- A door station can be used as a card issuer to obtain a card number when adding the card in iVMS-4200.

<b>Title:</b>	RN DS-KD3002 v1.5.0 013019NA	<b>Version:</b>	v1.5.0	<b>Date:</b>	013019
<b>Product:</b>	DS-KD3002 Door Station	<b>Build:</b>		<b>Page:</b>	4 of 8
<b>Action Required:</b>	None, Information Only				

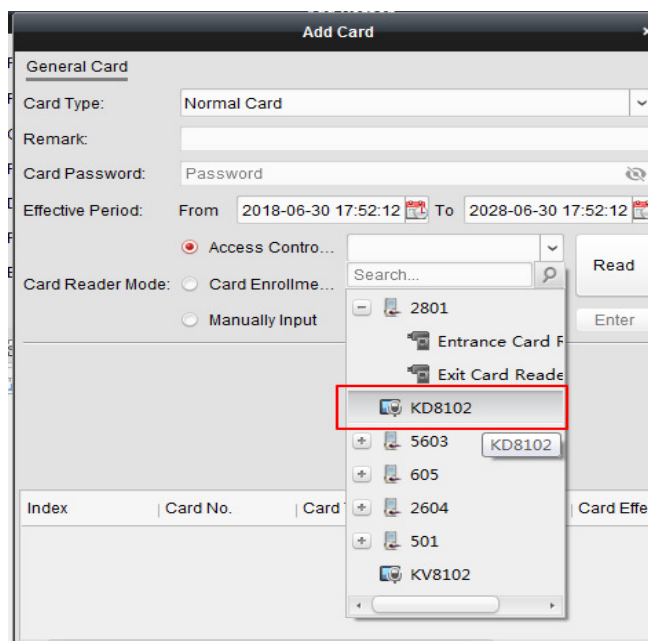


Figure 5, Add a Card

- Door station can issue card by inputting issued card's password locally. Door station's issued card password (6-bit issued card password) can be set on iVMS-4200.
- iVMS-4200 supports setting door station's own public unlocking password (three public unlocking passwords).

<b>Title:</b>	RN DS-KD3002 v1.5.0 013019NA	<b>Version:</b>	v1.5.0	<b>Date:</b>	013019
<b>Product:</b>	DS-KD3002 Door Station	<b>Build:</b>		<b>Page:</b>	5 of 8
<b>Action Required:</b>	None, Information Only				



Figure 6, Setting Public Passwords

## ■ Supported Device

- DS-KD3002-VM

## ■ List of Compatible Hikvision Devices

Model	Firmware
DS-KH8301-WT	v1.5.0_181031
DS-KH8300-T	v1.5.0_181031
iVMS-4200	iVMS-4200 build 181119

## ■ Installation and Configuration

- A KH indoor station can live view and hear the voices from a KB door station. Clicking enable/disable on the audio menu will toggle the indoor station's ability to audibly communicate with the door station.
- A door station can connect to a DS-K2M060 door control unit through an RS-485 connection. When verified successfully, door one with RS-485 and door two with NO/NC COM will open.
- Connect wiring as shown in Figure 7, Wiring a Secure Door Control Unit.

Title:	RN DS-KD3002 v1.5.0 013019NA	Version:	v1.5.0	Date:	013019
Product:	DS-KD3002 Door Station	Build:		Page:	6 of 8
Action Required:	None, Information Only				

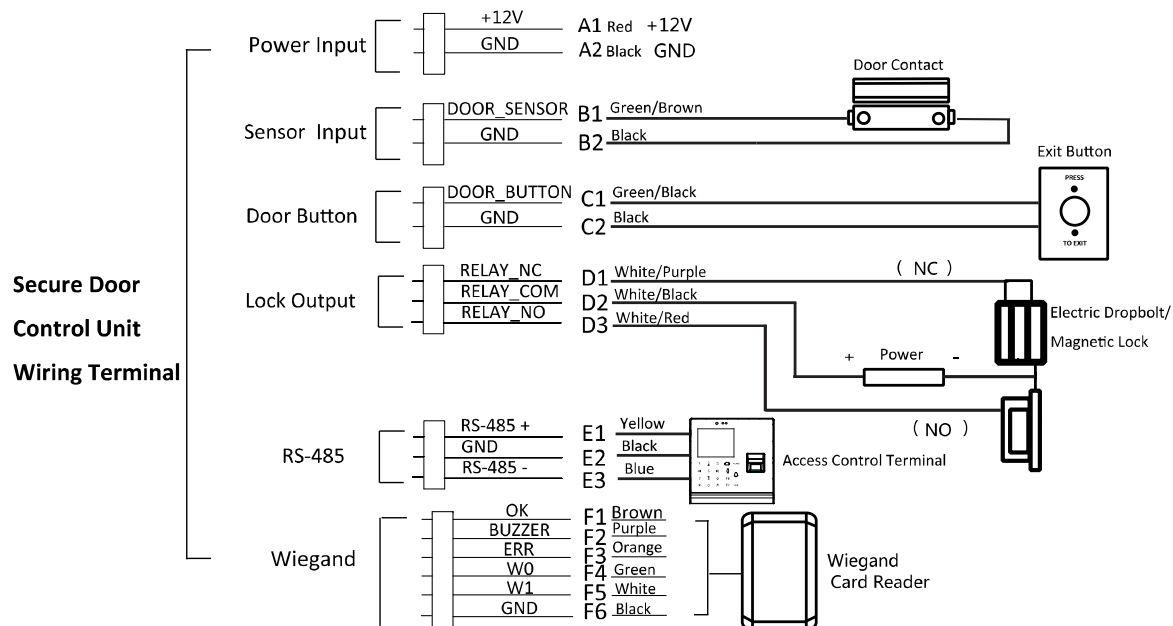


Figure 7, Wiring a Secure Door Control Unit

- Connect wiring between a door station and a lock (see Figure 8, Door Station and Lock Wiring).

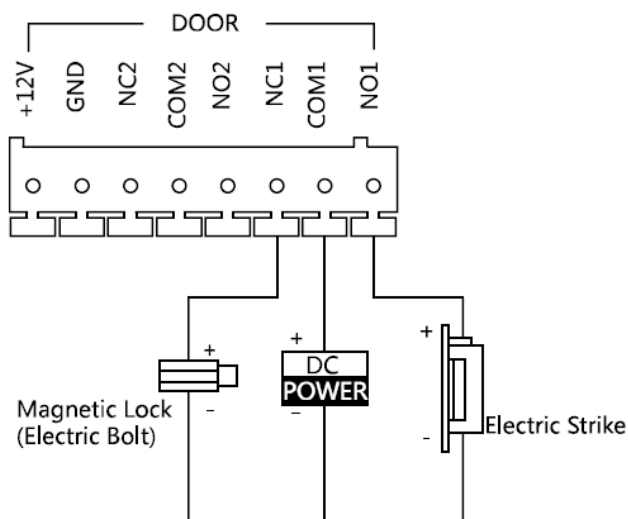


Figure 8, Door Station and Lock Wiring

**NOTES:** Terminal NC1/COM1 is set as default for accessing a magnetic lock/electric bolt.

<b>Title:</b>	RN DS-KD3002 v1.5.0 013019NA	<b>Version:</b>	v1.5.0	<b>Date:</b>	013019
<b>Product:</b>	DS-KD3002 Door Station	<b>Build:</b>		<b>Page:</b>	7 of 8
<b>Action Required:</b>	None, Information Only				

Terminal NO1/COM1 is set as default for accessing electric strike.

To connect an electric lock in terminal NO2/COM2/NC2, you must set the terminal NO2/COM2/NC2 output to be an electric lock with the iVMS-4200.

- Configure Secure Door Control Units
  1. Enter the iVMS-4200 software path: **Remote Configuration > System > RS-485.**
  2. Set RS-485 address DIP switch to 1 (set door secure control unit DIP switch as 1).
  3. Set bit rate to 19600.
  4. Set working mode to secure door control unit.

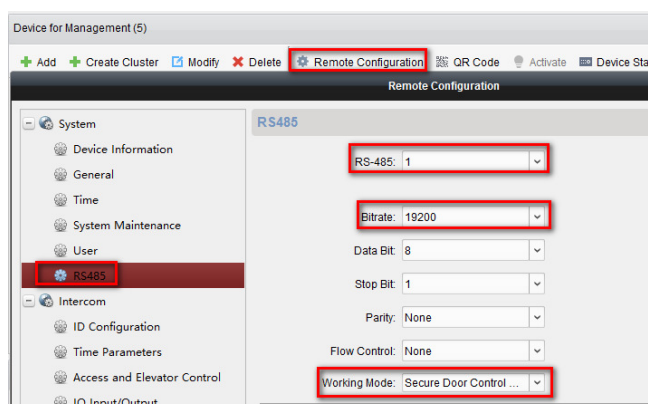


Figure 9, Configure Secure Door Control Units

**NOTE:** When pressing the call button on a door station, the indoor station will unlock two doors at the same time; you cannot unlock door one and door two separately.

You can configure the unlock time of the secure door control unit. Unlock time is the same as the lock connected with NC COM.

- Set Alarm Input Type to Fire Alarm (When it Triggers, All Doors Will Open)
  1. Enter the iVMS-4200 software to set the IO input: **Remote Configuration > Intercom > IO Input/Output**
  2. Set IO Input No to 1.
  3. Set Input Type to Custom.

<b>Title:</b>	RN DS-KD3002 v1.5.0 013019NA	<b>Version:</b>	v1.5.0	<b>Date:</b>	013019
<b>Product:</b>	DS-KD3002 Door Station	<b>Build:</b>		<b>Page:</b>	8 of 8
<b>Action Required:</b>	None, Information Only				

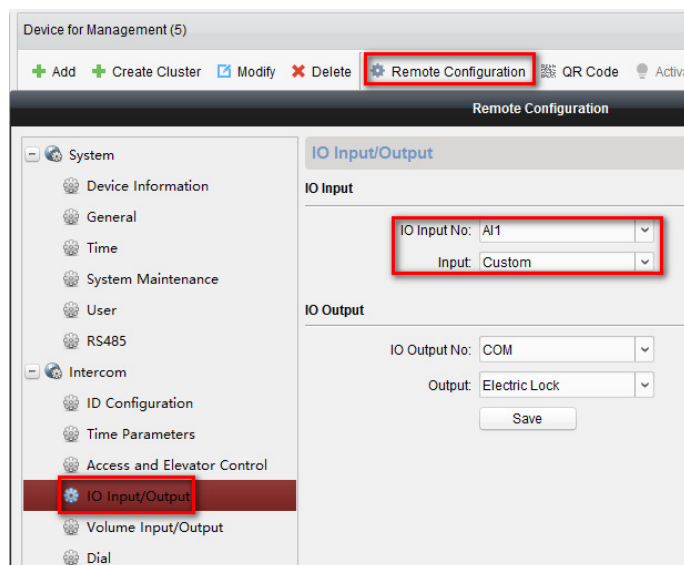


Figure 10, Set IO Input

**EXAMPLE:** Disconnect alarm1 and GND port, door one and door two will open