



HIKVISION[®]

2016

SADP
Download & Install

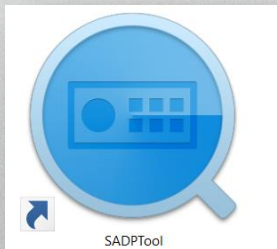
SADP Tool

SADP = Search Active Device Protocol.

Currently only supported on Windows OS

Finds only devices on same physical network as computer

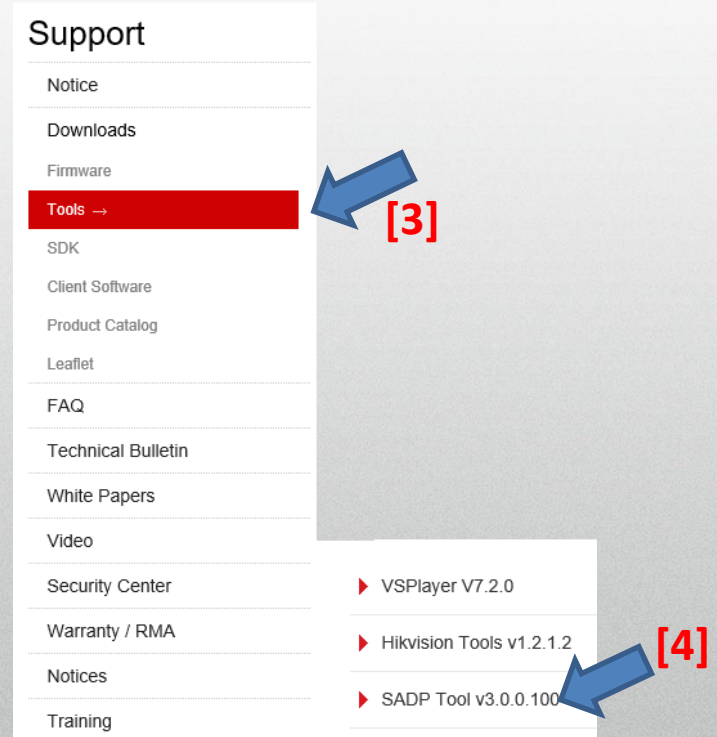
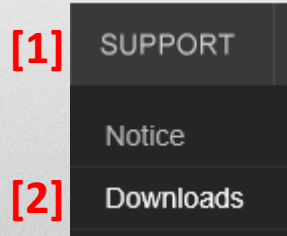
Finds all Hikvision devices on physical network, even if on other subnets



<input type="checkbox"/>	ID	Device Type	Security	IPv4 Address	Port	Software Version	IPv4 Gateway	HTTP Port	Device Serial No.
<input type="checkbox"/>	001	DS-7608NI-E2/8P	Active	192.168.0.3	8000	V3.4.3build 1608...	192.168.0.1	80	DS-7608NI-E2/8P0820150108AARR...
<input checked="" type="checkbox"/>	002	DS-7208HGHI-SH	Inactive	192.0.0.64	8000	V3.1.10build 151...	0.0.0.0	80	DS-7208HGHI-SH0820151225AAWR...
<input type="checkbox"/>	003	DS-2CD4085F	Active	192.168.0.98	8000	V5.3.4build 1508...	192.168.0.1	80	DS-2CD4085F20150321CCWR50856...

How to Download

- Go to Hikvision.com
- Click on SUPPORT [1]
- Then DOWNLOADS [2]
- Choose TOOLS [3]
- Click on SADP Tool [4]



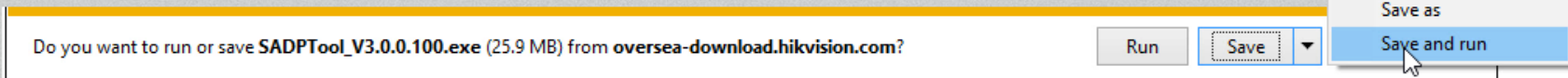
How to Download

- Click on “Download” link [1]
- Click on “Agree with License” [2]
- Have your browser SAVE and RUN the file [3]



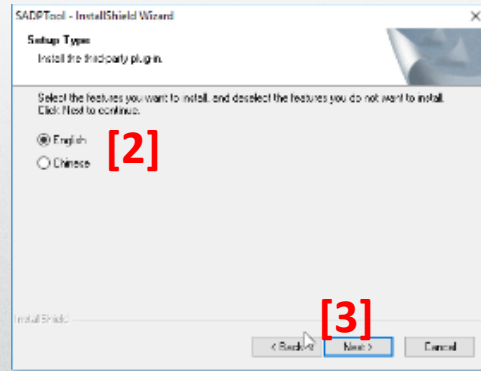
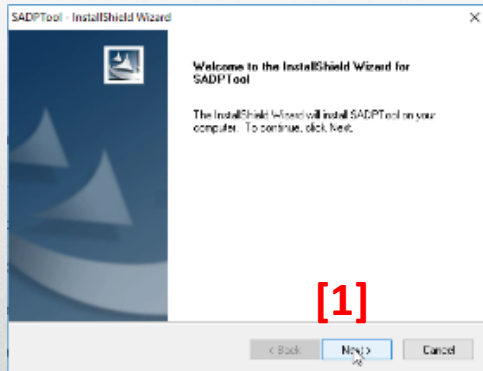
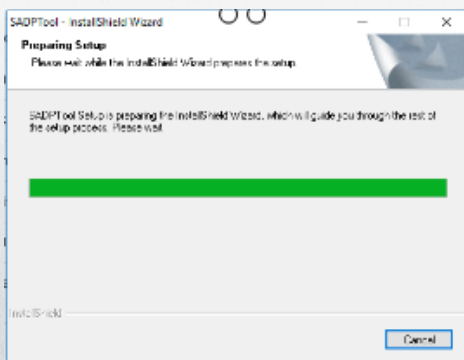
Agree with the license agreement

[2]

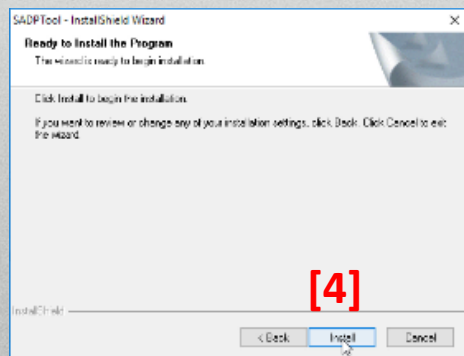


Running the SADP Installer

- Follow the steps; click “Next” [1]



- Then choose all the default settings



HIKVISION

Completing the Install Process

- Close any other open programs; save your work
- Allow the Wizard to reboot your PC [1]
- Click “Finish [2] PC will reboot
- After reboot, double click on desktop SADP icon [3] to launch SADP Tool

