



BUDGET-FRIENDLY WI-FI TEMPERATURE SCREENING TERMINAL, PERFECT FOR SMALL BUSINESSES

BENEFITS

- Mitigates Risk: Screen for elevated skin-temperature before an employee or visitor enters the building.
- Improves Morale: Facilitates a safer environment for employees and visitors.
- Lowers Costs: Easy automated operation improves efficiency.

MINMOE TOUCHLESS ACCESS CONTROL TERMINAL WITH TEMPERATURE

Hikvision's new Wi-Fi enabled Temperature Screening Terminal DS-K1T341BMWI-T is a budget-friendly, touchless access control device integrated with thermographic temperature screening and mask detection.

It's a great solution to enable safe operations for small businesses, including restaurants, markets and grocers, coffee shops, gyms and boutiques.

The terminal uses a Wi-Fi connection and power outlet, enabling easy installation and flexible placement. It is equipped with 2.4GHz Wi-Fi which can be deployed anywhere with a wireless connection and power outlet.

The 4.3-inch LCD touch screen simplifies configuration and user interaction, and it integrates with Hikvision NVRs for live view and playback. It quickly measures skin-surface temperature and displays it on the 4.3-inch touch screen LCD.

Key features include:

- Cost-effective, touch-free access control
- Wi-Fi enabled for flexible installation
- Built-in temperature screening and mask detection
- All-in-one solution combines touchless access control, skin-surface temperature measurement, and mask detection



DS-K1T341BMWI-T

ACCURATE & AFFORDABLE TEMPERATURE SCREENING

Designed for customers who want to ensure safety while operating on a discerning budget, the 4.3-inch touchless terminal rapidly screens skin-surface temperature using thermographic technology and provides face mask detection with audible alerts. The terminal uploads abnormal temperature event records for easy reporting and tracking.

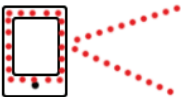







The terminal features:

- Temperature measurement range: 86° to 113° F (30° to 45° C)
- Accuracy up to $\pm 0.9^{\circ}$ F ($\pm 0.5^{\circ}$ C)
- Temperature measurement distance: 0.98 feet to 3.3 feet (0.3 m to 1 m)
- Fast temperature measurement mode
- Multiple authentication modes
- Face mask detection features, including face mask alert & forced mask wearing alert
- Built-in Mifare card reading module
- 3,000-person capacity, 5,000 Mifare card capacity, and 100,000 event capacity
- View temperature results on local screen for quick identification
- No need to set permissions, normal temperature will unlock the door

The terminal is equipped with a 2 MP wide-angle dual-lens, an anti-spoofing feature where an individual cannot be granted access by holding up a photograph. Important access control interfaces include a lock relay, request to exit (REX), Wiegand, RS485 and a tamper alarm.

Our Temperature Screening Terminal supports multiple authentication modes including access control card with normal temperature, ID with normal temperature. Both can be combined with the use of mask detection. During the temperature screening process, an audible warning will alert if no mask is detected and the person will be denied entrance until a mask is detected.

Hikvision's thermographic skin-temperature screening technology sets it apart from competitors. See the chart below for Hikvision advantages.

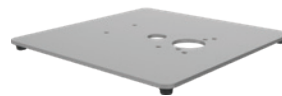
Hikvision	Other Solutions
 <p>Full screen measurement</p>	 <p>Fixed limited area measurement</p>
 <p>Accurate measurement and tracking with deep learning technology</p>	 <p>Measurement only in a limited area and accuracy is limited</p>
 <p>Measurement distance: 0.98 - 3.3 ft (0.3 - 1.0 m)</p>	 <p>Measurement distance: 0.98 - 1.6 ft (0.3 - 0.5 m)</p>
 <p>Efficiency: 0.2 - second screening</p>	 <p>Efficiency: 5 - second screening</p>

DS-K1T341BMWI-T OPTIONAL ACCESSORIES

DS-KAB671-B



DS-KAB6-BASE



Versatile installation options: The DS-K1T341BMWI-T MinMoe terminal can be placed anywhere on the floor with optional stand.

OPTIONAL VIDEO INTERCOM MONITORING TABLET DS-KC001



Video Monitoring Tablet Simplifies Temperature Screening

Using our Video Intercom Monitoring Tablet DS-KC001 with our Temperature Screening Terminal simplifies monitoring of security and temperature. The tablet is equipped with a 7-inch colour touch screen LCD and a built-in 32 GB SD card that can record up to 100,000 temperature records and events. Abnormal temperature alarms and temperature records are sent to the monitoring tablet in real-time, allowing onsite personnel to quickly identify anyone with elevated skin-surface temperature and take immediate action to comply with guidelines.

Temperature Screening + Access Control + Video Surveillance = Versatile and Precise Monitoring Solution

- 7-inch Touch Screen Android Monitoring Tablet
- Display Resolution: 1024x600; Wi-Fi 802.11b/g/n
- Remote Temperature Screening and Records Checking with Real-Time Preview
- Centralized Data Management up to 100,000 Records
- Built-in 32 GB SD card
- Abnormal Temperature Alarm
- Remote Access Control and Video Intercom
- Power Adaptor Included

DS-K1T341BMW-T SPECIFICATION

Model	DS-K1T341BMW-T	
Operating System	Linux	
Temperature Measurement	Sensor	Vanadium Oxide uncooled sensor
	Resolution	120 × 160
	Frame Rate	25 fps
	Temperature Range	86 °F to 113 °F (30 °C to 45 °C)
	Temperature Accuracy	±0.9° F (±0.5 °C)
	Measuring Distance	0.98 to 3.3ft (0.3 to 1.0 m)
Screen	Screen	4.3-inch touch screen
	Resolution	272 x 480
Camera	2 MP dual-lens camera	
Indicator	Supported	
Network	Wired	10/100 Mbps self-adaptive
	Wireless	2.4GHz Wi-Fi
Capacity	Person	3,000
	Mifare Card	5,000
	Event	100,000
Interface	Network Interface	1
	RS-485	1
	Wiegand	1
	Lock Relay	1
	Exit Button (REX)	1
	Door Contact Input	1
	Tamper	1
Card Enrollment	Card Type	Mifare 1 Card
	Card Reading Distance	0 to 2 inches (0 to 5 cm)
	Card Reading Duration	<1s
	Person Reading Duration	<0.2s
Function	Person Anti-Spoofing	Supported
	Audio Prompt	Supported
General	Operating Voltage	12 VDC/2 A (Included)
	Operating Temperature	32°F to 122°F (0°C to 50°C)
	Operating Humidity	10 to 90% (non-condensing)
	Power Consumption	<15 W
	Dimensions	3.35" x 8.94" x 1.2" (85 mm × 227 mm × 30 mm)
Installation	Wall Mount Brackets	Wall Mount Plate (included, single gang box compatible)
	Floor Stand	DS-KAB671-B (Optional)
	Floor Stand Base	DS-KAB6-BASE (Optional)

FOCUSED ON YOUR SUCCESS

HIKVISION

©2020 Hikvision USA Inc. and Hikvision Canada Inc. All rights reserved. Hikvision is a registered trademark of Hikvision Digital Technology Co., Ltd. in the US, Canada and other countries. Product specifications and availability are subject to change without notice.

Disclaimer: Hikvision USA Inc. products depicted herein are not FDA approved medical devices and are not intended for use in the diagnosis of disease or other conditions, or in the cure, mitigation, treatment, or prevention of disease. When configured correctly, the Hikvision products discussed herein can identify elevated human skin-surface temperature relative to a sample population.